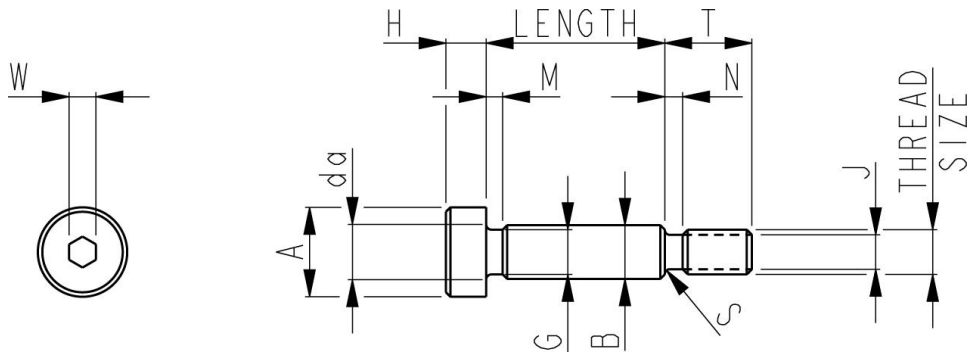


Socket Head Shoulder Screws



Body Size	Thread Size	Pitch	A Max.	B		Dia Max	G Max	H Max	J Max	M Max	N Max	S Max	T		W Max
				Min	Max								Max	Min	
6.00	M5	0.8	10.00	5.990	5.960	6.80	5.62	4.50	3.84	1.85	2.00	0.55	9.75	9.25	3.0
8.00	M6	1.0	13.00	7.987	7.957	9.20	7.62	5.50	4.56	1.85	2.50	0.65	11.25	10.75	4.0
10.00	M8	1.25	16.00	9.987	9.957	11.20	9.62	7.00	6.23	1.85	3.00	0.85	13.25	12.75	5.0
12.00	M10	1.50	18.00	11.984	11.954	14.20	11.62	8.00	7.89	1.85	3.50	1.05	16.25	15.75	6.0
16.00	M12	1.75	24.00	15.984	15.954	18.20	15.62	10.00	9.54	1.85	4.00	1.15	18.25	17.75	8.0
18.00	M14	2.00	27.00	17.984	17.954	20.20	17.62	12.00	11.20	2.50	4.50	1.25	20.25	19.75	10.0
20.00	M16	2.00	30.00	19.980	19.950	22.40	19.62	14.00	13.20	2.50	4.50	1.25	22.25	21.75	10.0
22.00	M18	2.50	33.00	21.980	21.950	24.40	21.62	16.00	14.54	2.65	5.60	1.45	25.25	24.75	12.0
24.00	M20	2.50	36.00	23.980	23.950	26.40	23.62	16.00	16.54	2.65	5.60	1.45	27.25	26.75	12.0

Consult a supplier such as DMS or Umbrako however the table below provides an indication of standard lengths available,

Length

		12	16	20	25	30	40	50	60	70	80	90	100	120	140	160	180	200	
Diameter	6	*	*	*	*	*	*												
	8	*	*	*	*	*	*	*											
	10			*	*	*	*	*	*	*	*		*	*	*	*			
	12			*	*	*	*	*	*	*	*		*	*	*	*	*		
	16					*	*	*	*	*	*	*	*	*	*	*	*	*	*
	20						*	*	*	*	*	*	*	*	*	*	*	*	*

